

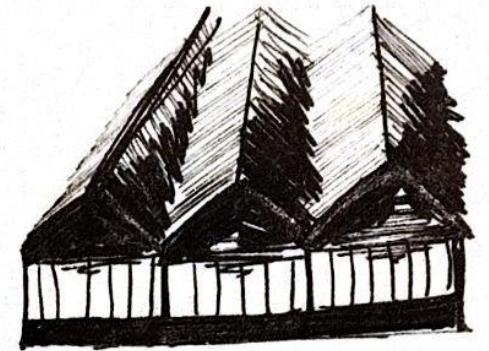
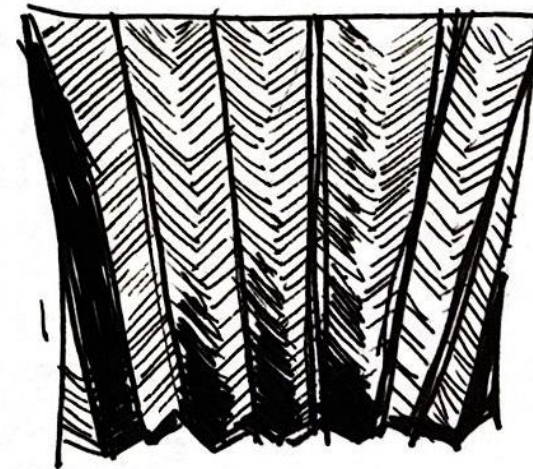
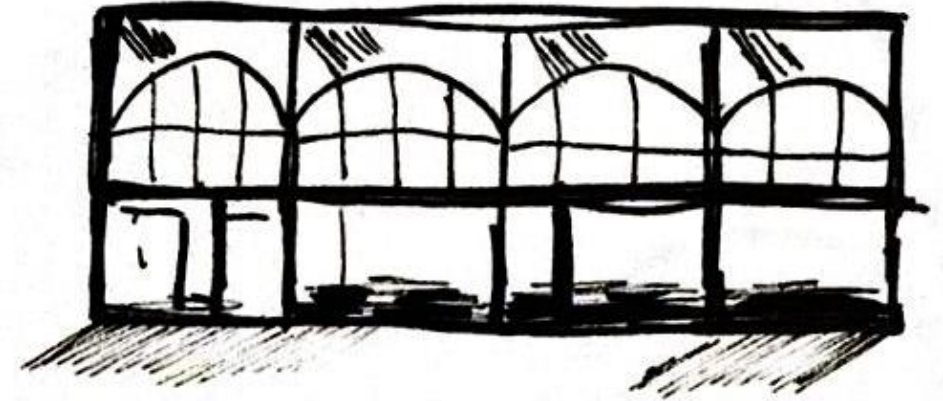
HOUSE OF MANY VAULTS

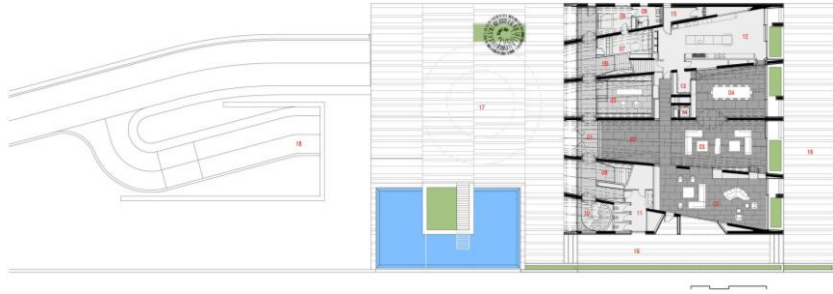
BY: AREESHA MAHBOOB,
KAMILA PASHAYEVA AND FADI
ALATTAR



House of Many Vaults was commissioned by a **Lebanese** businessman living in Abu Dhabi who wanted a summer holiday home that could accommodate all of his extended family.

Perched along the edge of the Shouf Mountains and overlooking the Mediterranean Sea, the residence sits below the shrine of the prophet Job, in the village of Niha, one of the most visited religious sites in Lebanon. The 30mx30m residence is a reinterpretation of the cross-vaulted houses that donned the local mountainous landscape at the turn of the century. A series of vaults, pertaining to the different residential programs, scale up both in plan and in section, in ascending slopes towards the view, and intersect with perpendicular vaults to create access points for circulation.

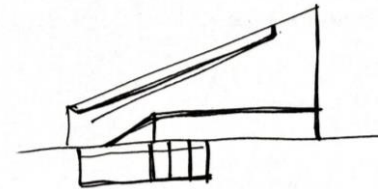
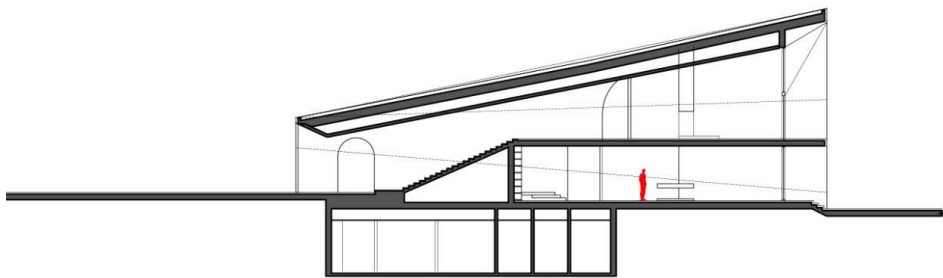




The house was aligned on its site to maximize views and in response to a nearby historical shrine.

In the northwest direction, the roof rises and squarely opens up towards the sea view. In the southeast, it slopes and kneels down in multiple pitches, angling its form towards the site of the shrine of the prophet Job

Responding to its sacred context, the house appears to ‘kneel’ towards the shrine, while opening towards the view. internally, the vaults organize the program on both of the house’s two storeys. the ground floor contains the main public functions, including the kitchen, dining area, lounge, office, and a guest bedroom. meanwhile, the level above accommodates two master bedrooms each occupying one of the four vaults.

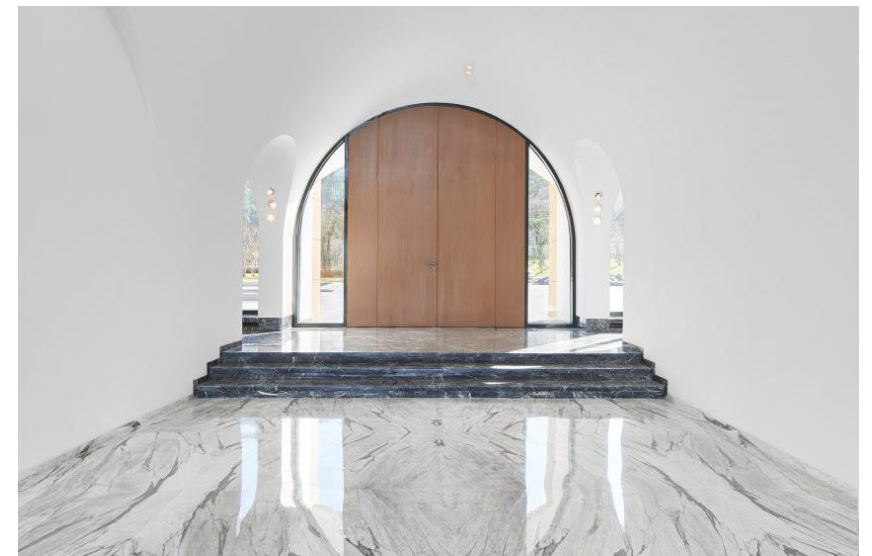


The house literally takes on this idea, by proposing a large roof architectural solution. The ceiling becomes the roof of the house; the roof is formed by the volume of the house, and, at the same time, it informs the spaces within.

On the ground floor, the house features all the shared spaces, including living rooms and a dining area. There is also an office, and a guest bedroom and kitchen.

Above, LEFT Architects has positioned two master bedrooms with their own living areas. These occupy the two vaults at either end, separated by the double-height living room below, and are fronted by sea-facing balconies.

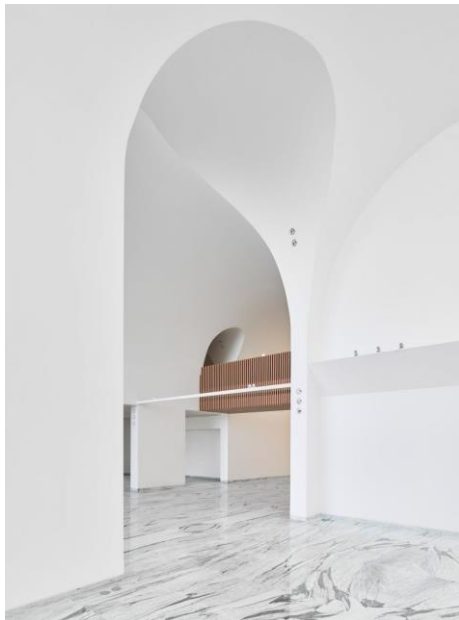
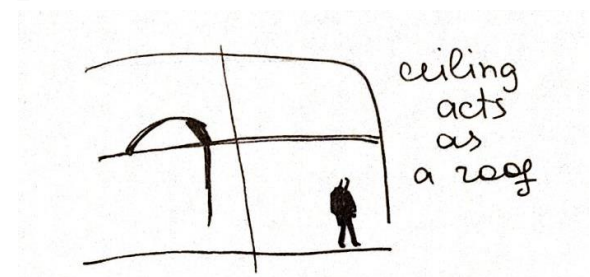
The House of Many Vaults also has a hidden basement level containing a sauna, spa and the children's bedrooms that face towards the valley.

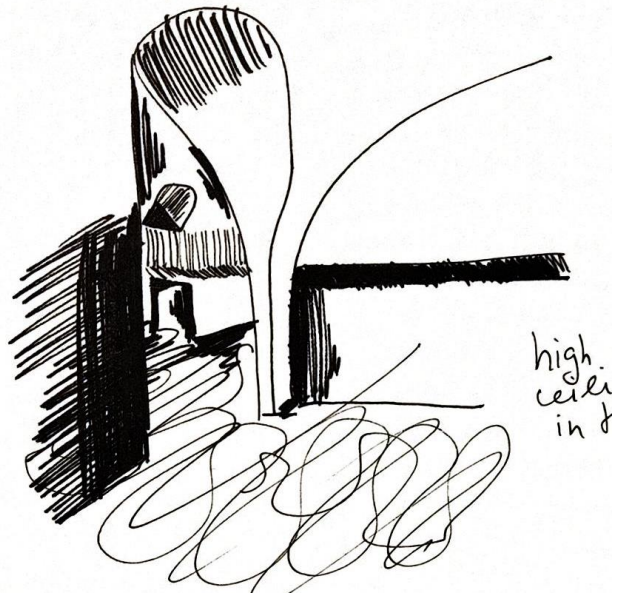




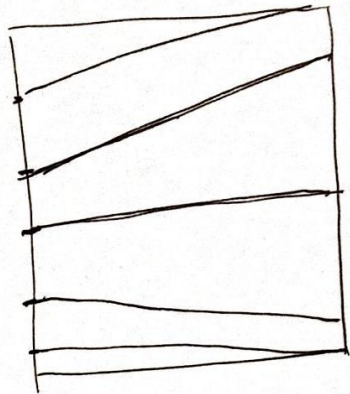
Contrasting with the house's beige Kour limestone exterior, the interiors are dominated by bright white walls teamed with wooden detailing and marble floors.

Alongside skylights that puncture the vaults, the bright white walls are intended to create airy and light interiors and "an uplifting buoyancy in the living spaces.

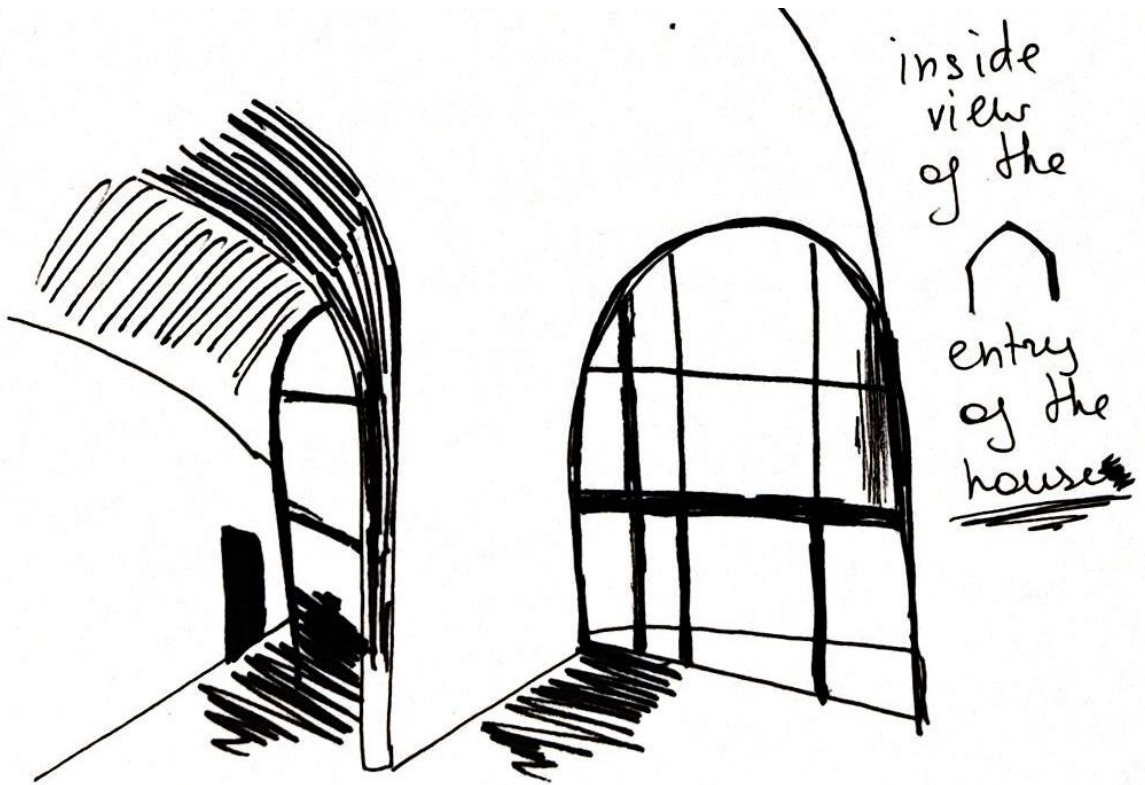




high
ceiling
in it



direction of
the building



inside
view
of the

entry
of the
house